

National Parks

Mariala National Park

Once apart of the Ambathala Pastoral Holdings, the area was grazed by sheep & cattle from 1874 until the early 1980's. In the early 1900's the area was used to breed horses for Cobb & Co stagecoaches.

Mariala is a remote Park which conserves over 27 300 hectares of scarps, ranges & deeply weathered plains which is 60 km east of Adavale.

A number of rare and threatened birds live here, including the vulnerable Major Mitchell (pink) cockatoo, rare red throat & rare square-tailed kite.

Ph: 07 4656 2166

Currawinya National Park

Located on the Qld/NSW border, near Hungerford. This 151,300 hectare park features two large bodies of water, Lake Numalla-freshwater and Lake Wyara- salt water.

A very popular bird watching area, including the rare and threatened, freckled Duck.

Relics of the pastoral occupation since the 1860's are scattered throughout the Park.

The Greater Bilby has been recently re-introduced to Currawinya National Park.

Ph: Queensland Parks & Wildlife Ranger 07 4655 4001

Lake Bindegolly National Park

40 km east of Thargomindah. A string of salt & freshwater wetlands at Lake Bindegolly form an important wildlife refuge in the arid zone. Home, to more than 195 birds, 80 other kinds of animals and 300 species of plants.

A 9.2 walking circuit around the edge of Lake Bindegolly is a must.

Ph: Queensland Parks & Wildlife Ranger: 07 4655 3173

Gundabooka National Park

Covers an area of 63,903 hectares. Located 50 km south of Bourke. 130 species of birds identified.

Mount Gunderbooka rises to 500m among the rust-coloured cliffs, gorges & hills of the Gunderbooka range.

The region is of great significance to the local Ngemba people and the range has a history of ceremonial gathering and rock art. "Captain Starlight" was captured on a rock ledge near a waterhole on Christmas Day in 1868

Ph: NPWS (02) 6872 2744

Culgoa National Park

Located 180km NE of Bourke. 166 species of fauna recorded.

Sit in the shade of the Coolibah trees lining the floodplain of the Culgoa River. Camping & picnic area is available.

Ph: NPWS (02) 6872 2744

Visitor Information Centres



Bourke Tourist Information Centre



Old Railway Building,
Anson Street
Bourke.
NSW 2840

Ph: 02 6872 1222 Fax: 02 6872 2305

Email: tourinfo@ozemail.com.au

Website: www.visitbourke.com

Quilpie Museum & Visitor Centre



Brolga Street,
Quilpie.
Qld 4480

Ph: 07 4656 2166 Fax: 07 4656 1016

Email: information@quilpieshire.com.au

Website: www.quilpie.qld.gov.au

Thargomindah Visitor Information Centre



Eccles Street,
Thargomindah.
Qld 4492

Ph: 07 4655 3399 Fax: 07 4655 3374

Email: thargo.info@bigpond.com

Website: www.bulloo.org.au

Photographs:

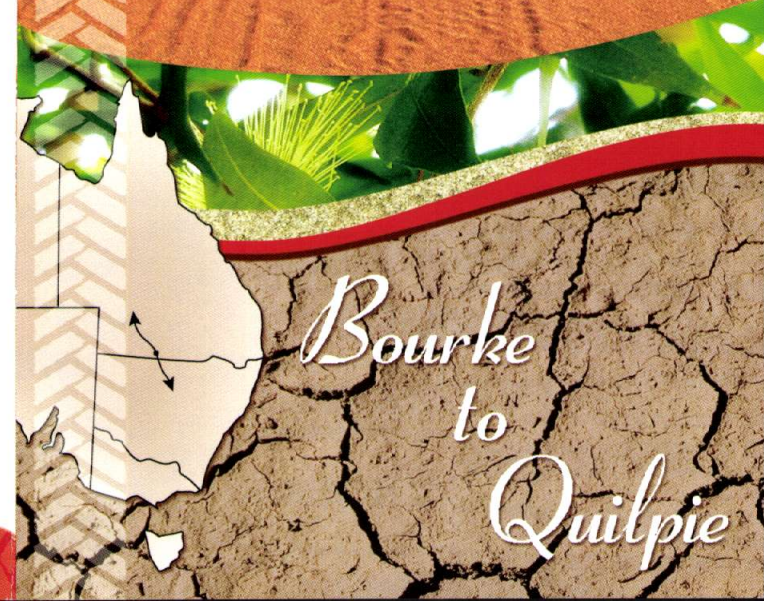
Danielle Lancaster/Nick Lancaster/Bluedog Pty Ltd

Outback & NSW QUEENSLAND



THE
DOWLING
TRACK

a journey of discovery



*Bourke
to
Quilpie*

THE DOWLING TRACK

Travel in the footsteps of Vincent James Dowling and other early pioneers who over 100 years ago discovered this area, known as the "Plains of Promise" - people travelled the track looking for a new life and new opportunities. The Australian author, Henry Lawson walked from Bourke to Hungerford and back in the hellish summer heat looking for work. The Dowling Track is 4WD experience linking Back 'o' Bourke and beyond to Quilpie in South West Queensland. Immerse yourself in the rich and diverse heritage as you travel this unspoilt land. See the stars stretch forever, it is where your journey becomes more important than your final destination.

Bourke

Bourke is the centre of the wool, cotton and citrus region as well as a popular tourist destination.

Situated on the Darling River, Bourke has a rich heritage, immortalised in both poetry and song, since the famous Henry Lawson lived here his experiences moved him to state, "if you know Bourke, you know Australia"

Charles Sturt passed through the district in 1828, however it wasn't settled until 1835 when, Sir Thomas Mitchell constructed a Fort, Fort Bourke, named after the Governor of NSW, Sir Richard Bourke.

Call into the Bourke Visitor Information Centre for all the details on tours and attractions. Bourke will charm you.

Fords Bridge

Fords Bridge, located on the Warrego River was once a small flourishing town with a butcher shop, post office, school, and race track. To-day 'Fordsy' is a sleepy town of four.

Call into the historical Warrego Hotel, built in 1913 from mud brick, thought to be the only pub in Australia still standing constructed from mud bricks.

Yantabulla

Originally called Yanda Bullen Bullen, aboriginal for "Plenty to eat", once was a prosperous town of nine houses, a hotel, store, school, police station and cordial factory.

Vincent Dowling once owned a homestead in Yantabulla. Cobb & Co had a changing station here.

Little remains to-day other than the spirits of those early days.

Hungerford

Hungerford is located on the Qld/NSW border, separated by a Rabbit Proof Fence, where you open a gate from one state to another.

Named after an Irishman, Thomas Hungerford, who with his brother pioneered country in New South Wales and Queensland.

The Royal Mail Hotel built in 1873 was originally a staging post for Cobb & Co and to-day is still an important part of the community.

Thargomindah

Thargomindah is a special town with a unique history.

First, in Australia and third in the world, one day after Paris to have street lighting generated by Hydro Power.

Discover Thargomindah's rich history with a town tour of the original Hospital, circa 1888, Leahy House, circa 1885, and the Thargomindah's original newspaper printery, circa 1884.

Call at the Visitor Information Centre for details.

Toompine

The quaint Toompine Hotel is a perfect example of what you expect of an Outback Pub. The sign at this old Cobb & Co staging post says it all: Toompine the pub with no town!

Ask for directions to the lonely little Toompine Cemetery and find out why it is called a "Cemery" (not cemetery).

Quilpie

"Home of the Boulder Opal" and "Colour of the Country" is located on a mulga ridge on the western side of the Bulloo River, out of flood reach.

A number of Australia's most famous graziers, including the Costellos, Tully's and Duracks pioneered the land around Quilpie and the historical records of these families have become an important part of Australia's farming history.

Quilpie opal is world famous and local fossicking is available 1.5km west of the town.

Visit the vast attractions of Quilpie, including the opal altar, lectern & font of the Roman Catholic Church, Baldy Top lookout, Lake Houdraman, Quilpie Art Gallery, and much more.

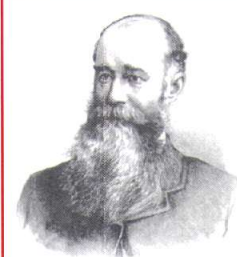
Contact the Quilpie Museum & Visitor Centre for further information.



THE DOWLING TRACK

feel your spirits soar as you journey on the track

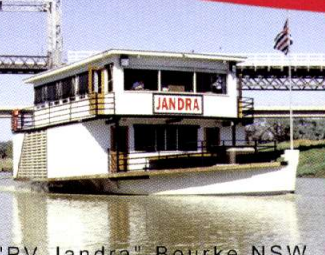
Vincent James Dowling (1835-1903)



- Explorer and Pastoralist, born in Flinton, NSW, 11 Jan 1835.
- 1859 he established Fort Bourke Station on the Darling River (not to be confused with Fort Bourke Stockade).
- 1861, he founded Caiwaroo & Eulo Stations on the Paroo River and Yantabulla & Birrawarra in NSW.
- 1864-65, settled Thargomindah Station.
- Traced the source of the Paroo & Bulloo Rivers.
- Mapped river & creek systems, ranges & plains and recorded Flora & Fauna in South West Queensland & Western NSW.

LEGEND

PHARMACY	CAMPING	ATM / EFTPOS	CDMA PHONE
HOSPITAL	CARAVAN PARK	GAS SUPPLIES	RACQ DEPOT
MEALS	ACCRED. TOURIST INFO	GRAVESITE	FISHING
ACCOMMODATION	TOURIST INFORMATION	HISTORIC SITE	FUELS LPG



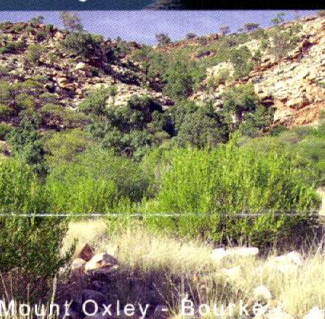
"PV Jandra" Bourke NSW



Bourke Post Office



Darling River



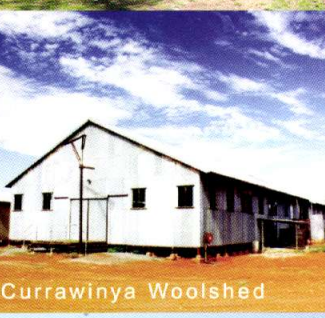
Mount Oxley - Bourke



Hungerford



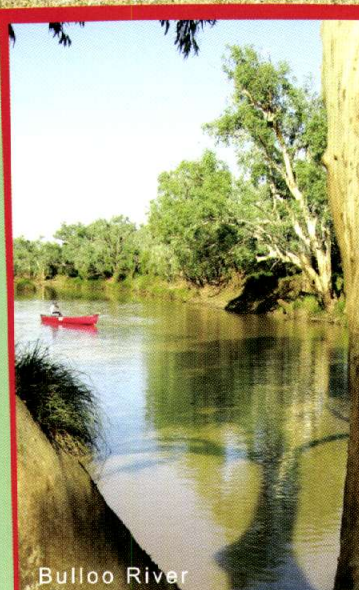
Brindigabba



Currawinya Woolshed



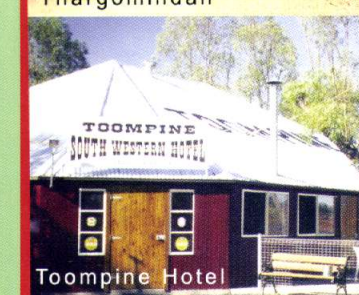
Currawinya Sculptures



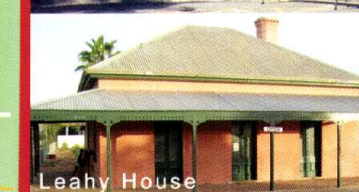
Bulloo River



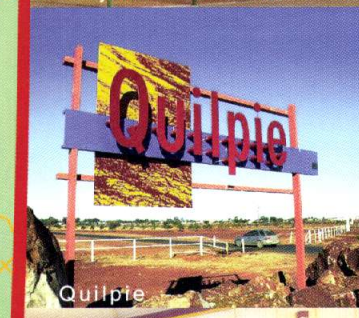
Thargomindah



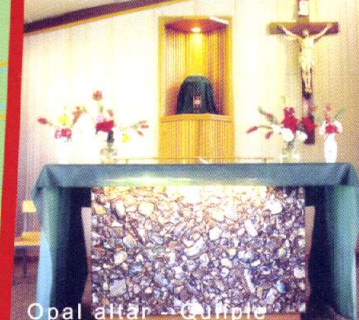
Toompine Hotel



Leahy House



Quilpie



Opal altar - Quilpie

